



Photographer: Unknown
Typography: Photographic bromoil

Publisher: Private

Distribution of the mail. Postcard is sent with the field post in October 1916. The postcard is sent from the 22nd Reserve Division, which was located on the Western front. Since this is a private card, the photo was most likely taken in the Champagne area where the 22nd Reserve Division was located at this time.



Photographer: Unknown
Typography: Photomechanical collotype

Publisher: Verlag Hermann Wolff

Love gifts have arrived with the field post. Postcard is sent with the field post from the front to Germany in March 1916.



Photographer: Unknown
Typography: Photomechanical colotype

Publisher: Sächsische Verlags Anstalt G.m.b.H.

Greetings from the front, news has arrived from the front.
Postcard is sent with the field post in April 1916.



Photographer: Unknown
Typography: Photomechanical letterpress halftone

Publisher: Beger & Röckel

Distribution of a love gifts parcel that has arrived.
Postcard is sent in March 1916.



Photographer: Unknown

Publisher: II. Bat., R.-I.-R. 104

Typography: Photomechanical collotype hand colored

Dr. Trenkler & Co

Distribution of love gifts on the Western front. Postcard is sent with the field post 24th Reserve Division in November 1915. Kgl. Sächs. Reserve-Infanterie-Regiment Nr. 104 (the publisher) was a part of 47. Reserve-Infanterie-Brigade, that was one of the two infantry brigades in the 24th reserve division. In the autumn of 1915, this unit participated in the second battle of Champagne in France.



Photographer: Unknown

Publisher: Kunst u. Verlagsanstalt

Typography: Photomechanical collotype

Schaar & Dathe

Receiving love gifts.

Postcard is sent with the field post to Germany in April 1915.



Photographer: Unknown
Typography: Photographic silver gelatin

Publisher: Paul Fink (Berlin)

Distribution of the field post to the German troops in Belgium.



Photographer: Unknown
Typography: Photomechanical collotype

Publisher: Moderner Kunst- Verlag G.m.b.H.

Distribution of the field post, on the Western front.
Postcard is sent in Germany in May 1916.



Photographer: Unknown
Typography: Photomechanical collotype

Publisher: Kunst- u. Verlagsanstalt
 Schaar & Dathe

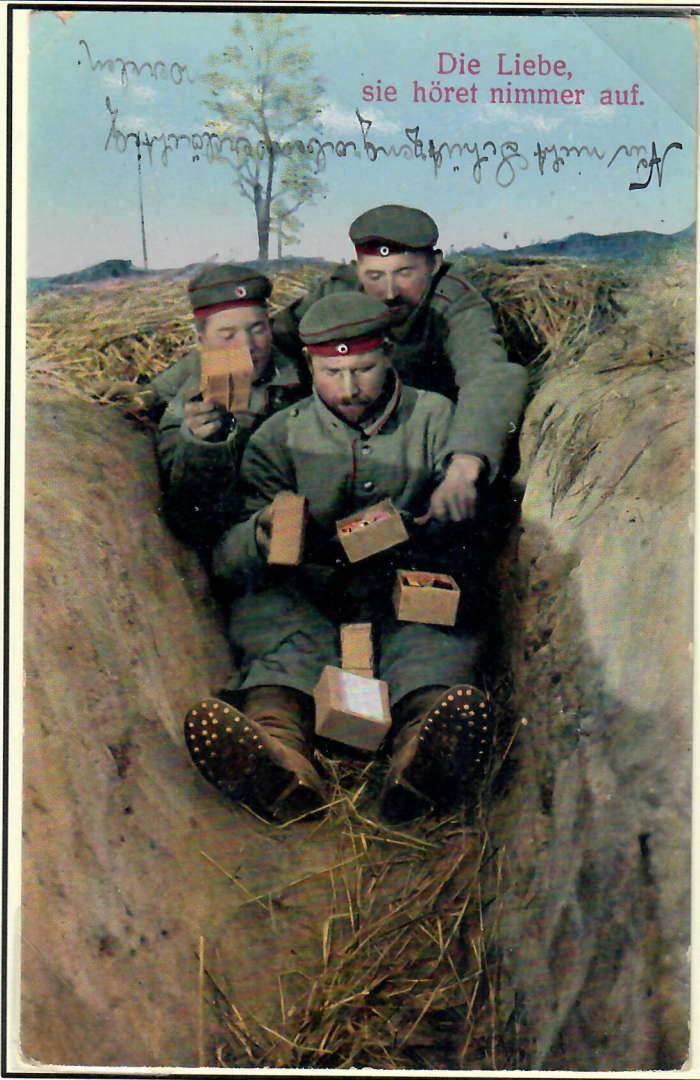
Distribution of the love gifts at the front.
 Postcard is sent with the field post in March 1915.



Photographer: Unknown
Typography: Photomechanical collotype

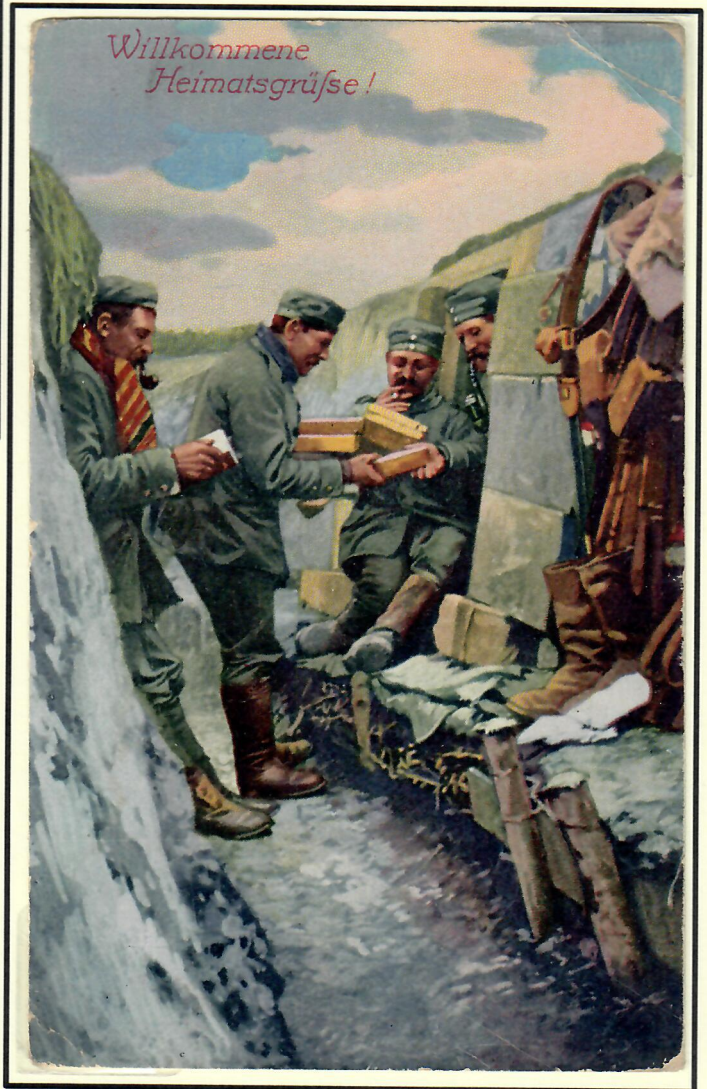
Publisher: Sächsischer Verlagsanstalt G.m.b.H.

Greetings from the front, Field post distribution.
 It is always popular to receive the letters and packages from the home. Picture is from the Western front. The postcard was sent with the field post in May 1917.



Photographer: Unknown
Publisher: JFB
Typography: Photomechanical letterpress halftone

The love never ends, soldiers receiving parcels from home.
Postcard is sent with the field post in October 1916.



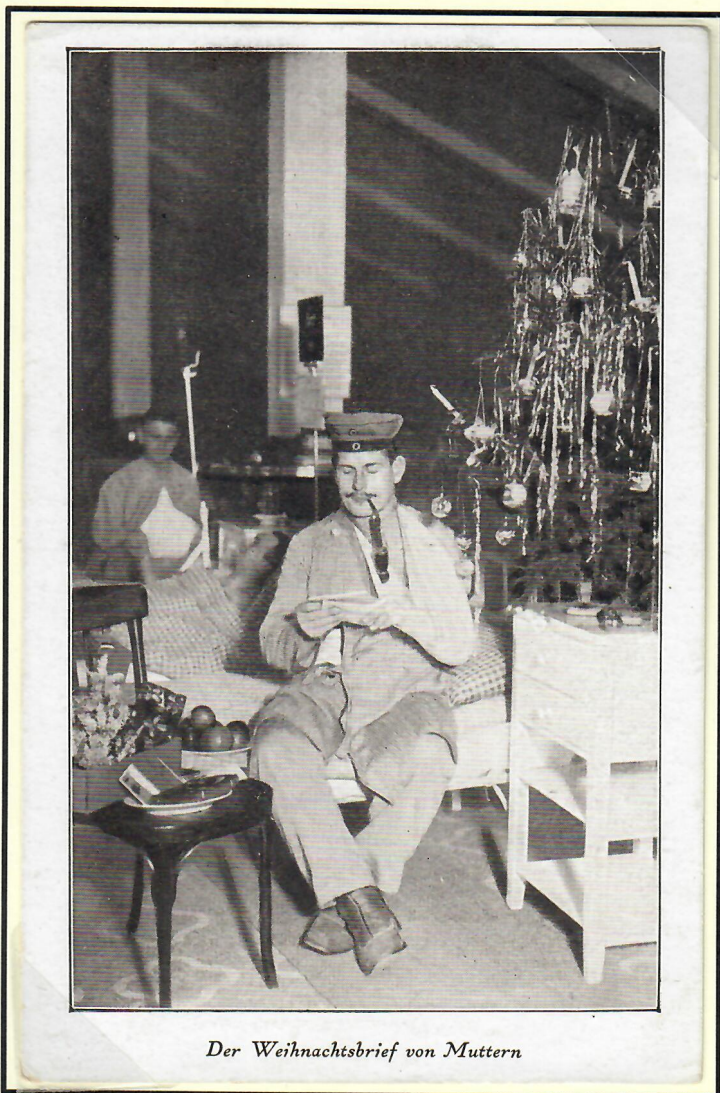
Photographer: Unknown
Publisher: Wenau Postkarte
Typography: Photomechanical letterpress halftone

Welcome greetings from home, the distribution of the love
gifts in the trenches on the Western front.
Postcard is sent with the field post in December 1915.



Photographer: Unknown
Publisher: Carl Garte
Typography: Photomechanical letterpress halftone

Heartful Christmas greetings.
Hooray, the field post has arrived.
Postcard is sent with the field post in December 1915.



Der Weihnachtsbrief von Muttern

Photographer: Unknown
Publisher: Unknown
Typography: Photomechanical letterpress halftone

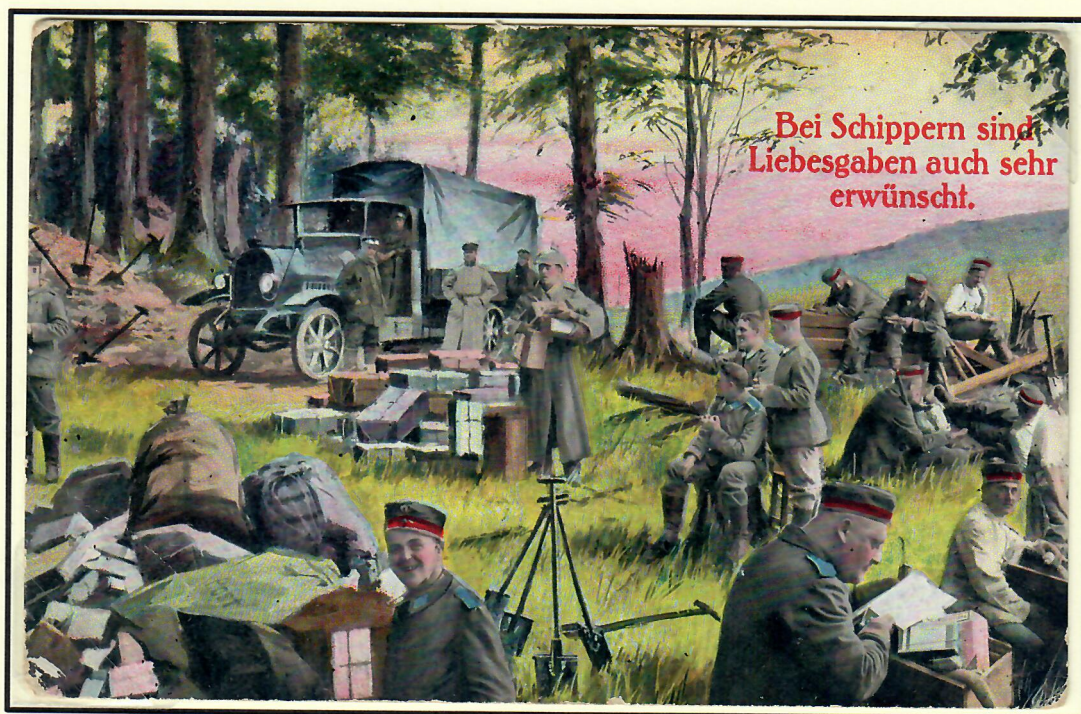
Christmas letter from mother.



Photographer: Unknown
Typography: Photomechanical rotogravure

Publisher: J. F. Lehmanns Verlag

Arrival of the field post on the Western front.



Photographer: Unknown
Typography: Photomechanical letterpress halftone

Publisher: Wilhelm S. Schroeder Nachf.

Love gifts are also very welcome.



Photographer: Unknown

Publisher: Wenau Postkarte

Typography: Photomechanical letterpress halftone

The field post has arrived. Postcard is sent June 1916.



Photographer: Unknown

Publisher: Private

Typography: Photographic bromoil

The mail has arrived in Russia in 1916.



Postverteilung im Felde

Photographer: Unknown
Typography: Photographic bromoil

Publisher: Private

Mail distribution at the front on the Western front.



Photographer: Unknown
Typography: Photographic bromoil

Publisher: Private

Arrival of the field post on the Eastern front. Parcels was a big and important part of the distributed mail, and for some soldiers it was even more important than the food.

II – Field Post Offices



Photographer: Unknown

Publisher: Private

Typography: Photographic silver gelatin

Officers in front of the field post station 64 (in Russia (from text)), the text describes it as Jezióra (Eastern Poland). Text says it is from his latest visit in this place, and the postcard is sent in April 1916.

After the mail was written and posted it went to the field post office. The field post system consisted of several different organization levels which were:

Feldpost-Sammelstelle – The field post sorting point in the rear areas. Which had an overview of where the different armies were located and which direction the mail should be sent.

Feldpostamt – The postal district assigned to an army corps. An army corps was usually consisting of two or more divisions with various support troops. The Feldpostamt had its own postal cancel.



Feldpostexpedition – The main postal office for the divisions. By the end of the war 251 divisions had been formed or reformed. The Feldpostexpedition had its own postal cancel.



Feldpoststation – Field post stations were located a little behind the front. The Feldpoststation had its own postal cancel.



After 15th February 1917 the postal cancels were muted so they did no longer display the military unit in the cancel.

This part of the collection is aiming to show the different field post offices across the different fronts and sizes of the post office, from the smallest shacks to the main post offices.



Photographer: Unknown
Typography: Photographic silver gelatin

Publisher: Private

Postal workers and some mail from the field post transfer point Tilsit in 1915. Tilsit was at this time located at the border towards Russia, and today is the town Sovetsk on the border between Russia and Lithuania.



Photographer: Illustrations Verlag
Typography: Photomechanical collotype

Publisher: J. Wieland & Co

The field post collecting place in Kolno, Polen.
Mail is stored outside the Feldpostamt.



Photographer: Unknown
Typography: Photomechanical collotype

Publisher: Verlag für allgemeines Wissen

The Feldpostamt in Buzancy, France.



Photographer: Unknown
Typography: Photographic bromoil

Publisher: Private

Postal wagon and workers outside a Feldpostamt. The Feldpostamt was assigned to an army corps, so this must be somewhat behind the frontline on the Western front.



Photographer: Unknown
Typography: Photographic silver gelatin

Publisher: Private

Inside the Feldpostamt for the 10th Reserve Corps, in 1916 the unit was located on the Western front and participated in the battle of Verdun.



Photographer: Unknown
Typography: Photographic silver gelatin

Publisher: Private

Soldiers from the same unit outside the Feldpostamt..



*Soldatenheim
und
Feldpostamt*

Photographer: Unknown
Typography: Photomechanical collotype

Publisher: Ludwig Fries

Outside the Feldpostamt on the Western front.
Postcard is sent with the field post in March 1917.



Photographer: Unknown
Typography: Photographic bromoil

Publisher: Private

Postal soldiers outside the German field post office, judging by the size and shape of the building it is a Feldpostamt located on the Western front.



Photographer: Unknown
Publisher: Private
Typography: Photographic silver gelatin

Soldiers outside the Feldpostamt for the IX. Army Corps on the Western front in France. Why they use the gas masks for this postcard is a mystery, but this type of German gas mask came in 1916.



Kaiserl. Postamt im Lager



Garnison-Verwaltung

Gruss aus dem Truppenlager Zossen

Photographer: Sowka-Wessner, Phot. Atellier
Publisher: Unknown
Typography: Photomechanical collotype

Greetings from the military camp Zossen, with the emperors Postamt in the camp. Sent in December 1914.