



Photographer: Unknown

Publisher: Private

Typography: Photographic gelatin POP

Postal wagon in front of a battalion building in Holodovo, Eastern front on 1st July 1916.

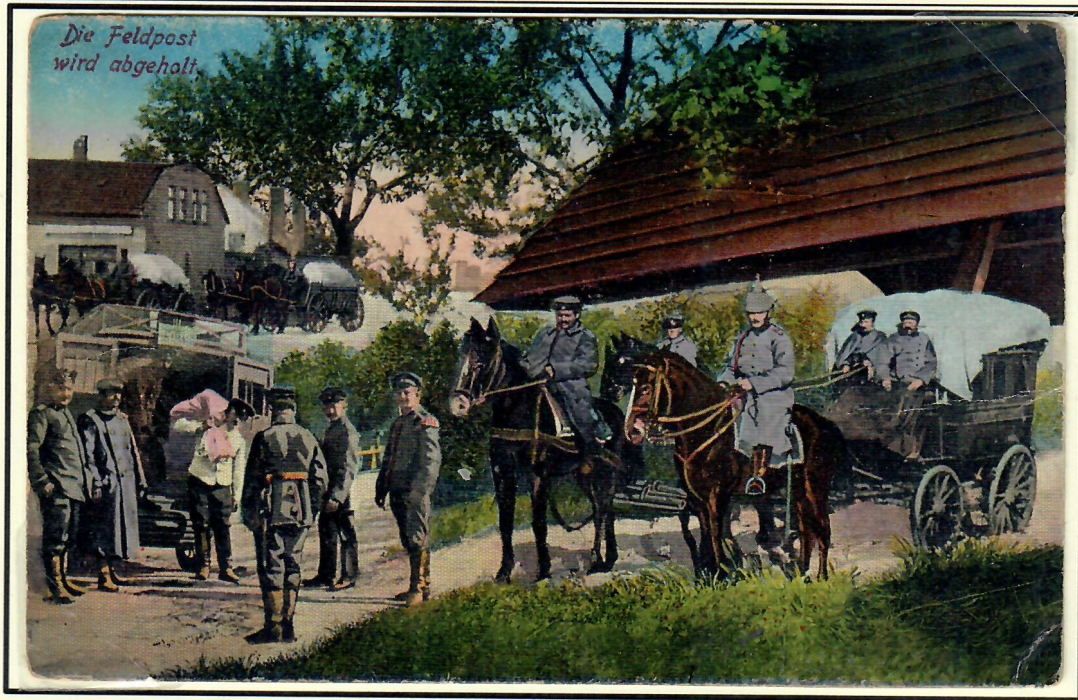


Photographer: Unknown

Publisher: Verlag Herman Wolff

Typography: Photomechanical collotype

Arrival of love gifts from the field post transported by horse to the soldiers.
Postcard is sent in August 1915.



Photographer: Unknown

Publisher: Carl Garte

Typography: Photomechanical letterpress halftone

The field post is picked up to be transported further on with horses.

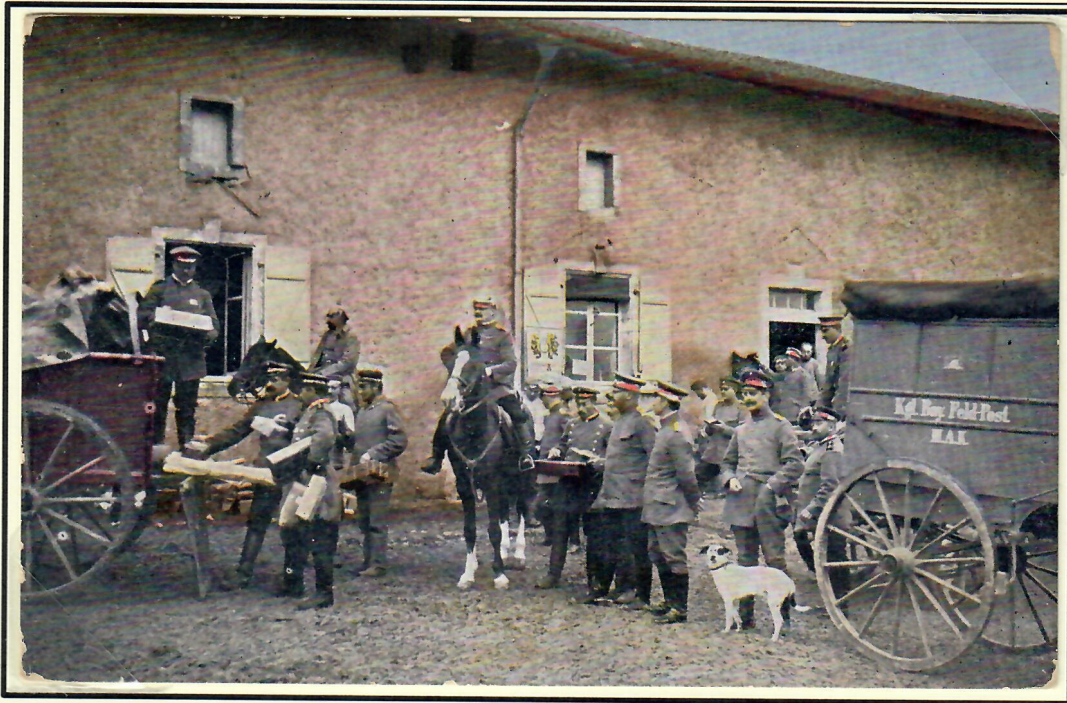


Photographer: Eberth Cassel

Publisher: Unknown

Typography: Photomechanical offset lithograph

The welcomed field post in Vogesen, France is arriving by horse.
Postcard is written and dated October 1916.



Photographer: Leipziger Presse-Büro

Publisher: Sächsische Verlagsanstalt G.m.b.H.

Typography: Photomechanical letterpress halftone

Royal Bavarian field post at the Bavarian III. Army Corps in St. Benoit, France.

The mail is transported by horses. Postcard is sent with the field post in March 1916.



Photographer: Unknown

Publisher: J. F. Lehmanns Verlag

Typography: Photomechanical rotogravure

The field post is on the way and transported by horses.



Photographer: Unknown
Typography: Photographic gelatin POP

Publisher: Private

Postal workers with a horse outside the field post station.
Postcard is sent with the field post in May 1916 from field post station 215.



Photographer: Unknown
Typography: Photographic silver gelatin

Publisher: Private

The mail is loaded onto a horse wagon somewhere on the Western front.
Postcard is sent with the field post in January 1917 from field post expedition for the 58th Infantry Division. The 58th Infantry Division was located in France at this date.



Photographer: Unknown

Publisher: Unknown

Typography: Photographic silver gelatin

The German field post moves out into the field.
Postcard is sent in December 1915.



Photographer: Unknown

Publisher: Private

Typography: Photographic silver gelatin

A mail carriage belonging to the 22nd Reserve Division.
Postcard is sent with the field post in May 1917, at this time the 22nd Reserve Division was located in France.



Photographer: Unknown

Publisher: Private

Typography: Photographic gelatin POP

Somewhere on the Western front, the sender wrote "... today I may send you a small picture with me and my postal wagon ...".

Postcard is written but not sent and dated in October 1917.



Photographer: Unknown

Publisher: Unknown

Typography: Photomechanical letterpress halftone

Our field post, this field post wagons horse was killed due to a direct hit, while the two coaches were unharmed. Postcard is written but not sent.



Photographer: Unknown
Typography: Photographic silver gelatin

Publisher: Unknown

Field post rider upon his arrival in the Corps headquarter in Russia, Poland. At this time period the Poland was not a separate country and was considered in this postcard as a place in Russia.



Photographer: Unknown
Typography: Photomechanical collotype

Publisher: E. Sanwald

A post car at the Western front.
Postcard is sent with the field post in December 1915.



Photographer: Unknown

Publisher: Sächsische Verlags-Anstalt G.m.b.H.

Typography: Photomechanical letterpress halftone and red lines handpainted

Arrival of the field post transported by truck.
Postcard is sent with the field post in March 1916.



Photographer: Hptm. Bansa

Publisher: P. Wever

Typography: Photographic silver gelatin

Field post sorting in the bivouac after arrival by truck.



Photographer: Alfred Kühlewindt
Typography: Photomechanical collotype

Publisher: O. Ziegler

The field post arrives with a truck and soldiers receives/sends their mail. Postcard sent in April 1915 from the front to home. Filipowo is in Poland today. Picture is taken in 1914. Postcard sent from 20th Armeekorps in Borkowo in April 1915.



Photographer: Alfred Kühlewindt
Typography: Photographic silver gelatin

Publisher: Gustav Liersch & Co

The field post arrives with a truck and soldiers receives/sends their mail in Filipowo, Russia (Poland today). Postcard sent in December 1914 from Posen to Sachsen.



Photographer: Alfred Kühlewindt
Typography: Photomechanical rotogravure

Publisher: Reichsverband zur Unterstützung deutscher Veteranen E.V.

A truck used for mail transport in Filipowo, Russia (Poland today) in 1914. Postcard is unused.



Photographer: Alfred Kühlewindt
Typography: Photomechanical collotype

Publisher: Kahan & Co., G.m.b.H.

A truck used for mail transport on the Eastern front, outside the church in Mirunskan, Poland 1915. The church served as a sorting point for the field post. Postcard is sent from Rastenburg 1915 to the front.



Photographer: Unknown

Publisher: Carl Garte

Typography: Photomechanical letterpress halftone

The field post station at the Western front after the arrival of the mail by truck. Postcard is sent with the field post in June 1917.



Photographer: Unknown

Publisher: BHC

Typography: Photomechanical collotype

Field post in operation, most likely at the western front.



Photographer: Unknown

Publisher: Imberg & Lefson G.m.b.H.

Typography: Photomechanical letterpress halftone

German field post truck is crossing a river in Galicia.
Postcard is sent by field post in May 1916.



Photographer: Unknown

Publisher: Kunst- u. Verlagsanstalt
Schaar & Dathe

Typography: Photomechanical collotype

The train is to arrive with the mail and be transported further by truck in Blérancourt, France.
Postcard is sent by field post in January 1916.



Photographer: Unknown
Typography: Photographic silver gelatin

Publisher: Unknown

Horse and train used for transport of the mail.
Postcard is sent by field post in December 1915.



Photographer: Unknown
Typography: Photographic silver gelatin

Publisher: Private

Horse wagon transporting the mail further on after the train transport. Postcard is unused.



Photographer: Gebrüder Haeckel

Publisher: Unknown

Typography: Photomechanical offset lithograph

The mail has arrived by train and the field post mailbags will be transported to the Feldpostamt.



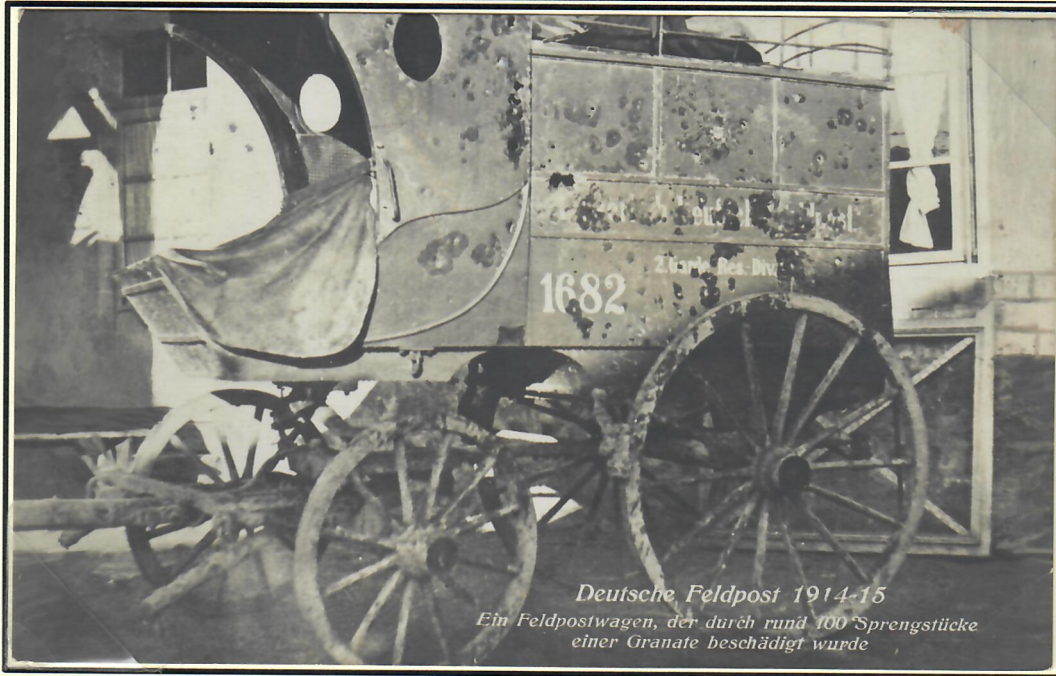
Photographer: Unknown

Publisher: Sächsische Verlags-Anstalt G.m.b.H.

Typography: Photomechanical letterpress halftone

Mail arrived by train from the home to Chambley, France.

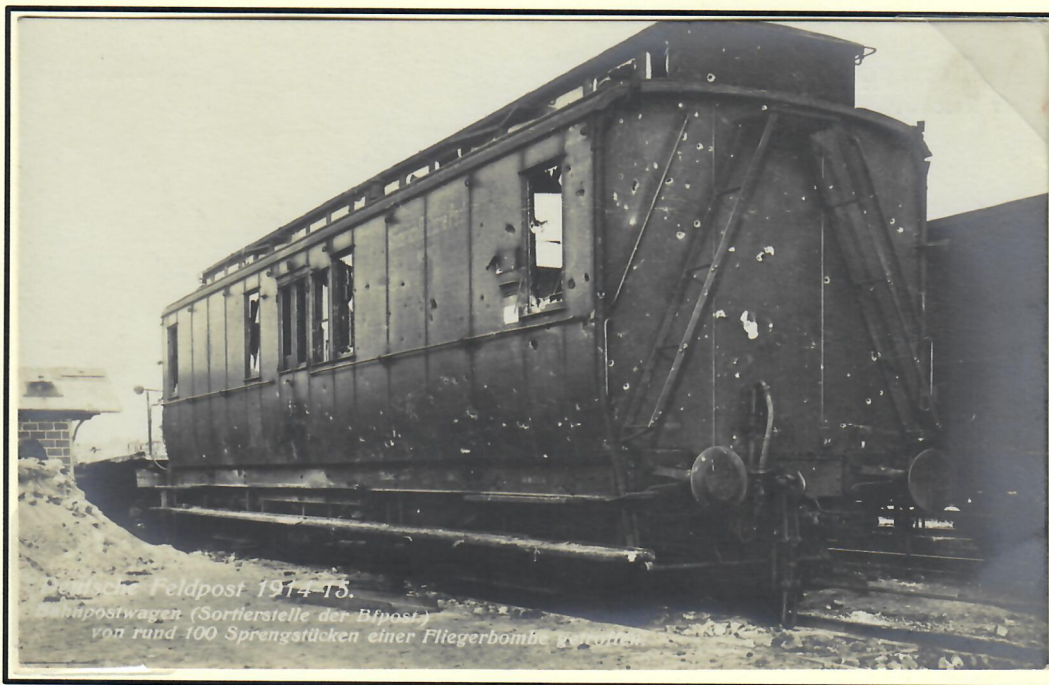
The postcard itself has been censored (retouched) to remove the location Chambley from the wall on the building. Postcard is sent by field post in December 1915.



Photographer: Unknown
Typography: Photographic silver gelatin

Publisher: Unknown

Transporting the mail is not without danger, damaged horse wagon for mail.
Postcard is sent in January 1916.



Photographer: Unknown
Typography: Photographic silver gelatin

Publisher: Unknown

Transporting the mail is not without danger, mail wagon attacked by plane.
Postcard is not used.

The End of the War and the Aftermath



Photographer: Wilh. Riegger

Publisher: Graph. Anstalt, Karlsruhe

Typography: Photomechanical letterpress halftone

Several personnel of the German field post service died during the war. A memorial placket raised after the war in memory of the lost service men.



Photographer: Koch

Publisher: Dr. T. V. Lpz.

Typography: Photomechanical letterpress halftone

In 1939 the second world war started and again it was necessary with the German field post service. The motive was so good that it was reused (compare with page 1 together with the plan).