



Photographer: Unknown

Publisher: Private

Typography: Photographic bromoil

Distribution of the mail. Postcard is sent with the field post in October 1916.
The postcard is sent from the 22nd Reserve Division, which was located on the Western front.
Since this is a private card, the photo was most likely taken in the Champagne area where the 22nd Reserve Division was located at this time.



Photographer: Unknown

Publisher: Verlag Hermann Wolff

Typography: Photomechanical collotype

Love gifts have arrived with the field post.
Postcard is sent with the field post from the front to Germany in March 1916.



Photographer: Vereengde Fotobureaux Amsterdam **Publisher:** Unknown
Typography: Photomechanical rotogravure

After receiving the field post, everyone is falling into the column with their received packages.
 Postcard is sent with the field post in July 1915.



Photographer: Unknown **Publisher:** Beger & Röckel
Typography: Photomechanical letterpress halftone

Distribution of a love gifts parcel that has arrived.
 Postcard is sent in March 1916.
 This picture has been published 2 times (color and B&W), with 2 different publishers.



Photographer: Unknown

Publisher: II. Bat., R.-I.-R. 104

Typography: Photomechanical collotype hand colored

Dr. Trenkler & Co

Distribution of love gifts on the Western front. Postcard is sent with the field post 24th Reserve Division in November 1915. Kgl. Sächs. Reserve-Infanterie-Regiment Nr. 104 (the publisher) was a part of 47. Reserve-Infanterie-Brigade, that was one of the two infantry brigades in the 24th reserve division. In the autumn of 1915, this unit participated in the second battle of Champagne in France.



Photographer: Unknown

Publisher: Kunst u. Verlagsanstalt

Typography: Photomechanical collotype

Schaar & Dathe

Receiving love gifts.

Postcard is sent with the field post to Germany in April 1915.



Photographer: Unknown

Publisher: Paul Fink (Berlin)

Typography: Photographic silver gelatin

Distribution of the field post to the German troops in Belgium.



Photographer: Unknown

Publisher: Moderner Kunst- Verlag G.m.b.H.

Typography: Photomechanical collotype

Distribution of the field post, on the Western front.
Postcard is sent in Germany in May 1916.



Photographer: Unknown
Typography: Photomechanical collotype

Publisher: Kunst- u. Verlagsanstalt
 Schaar & Dathe

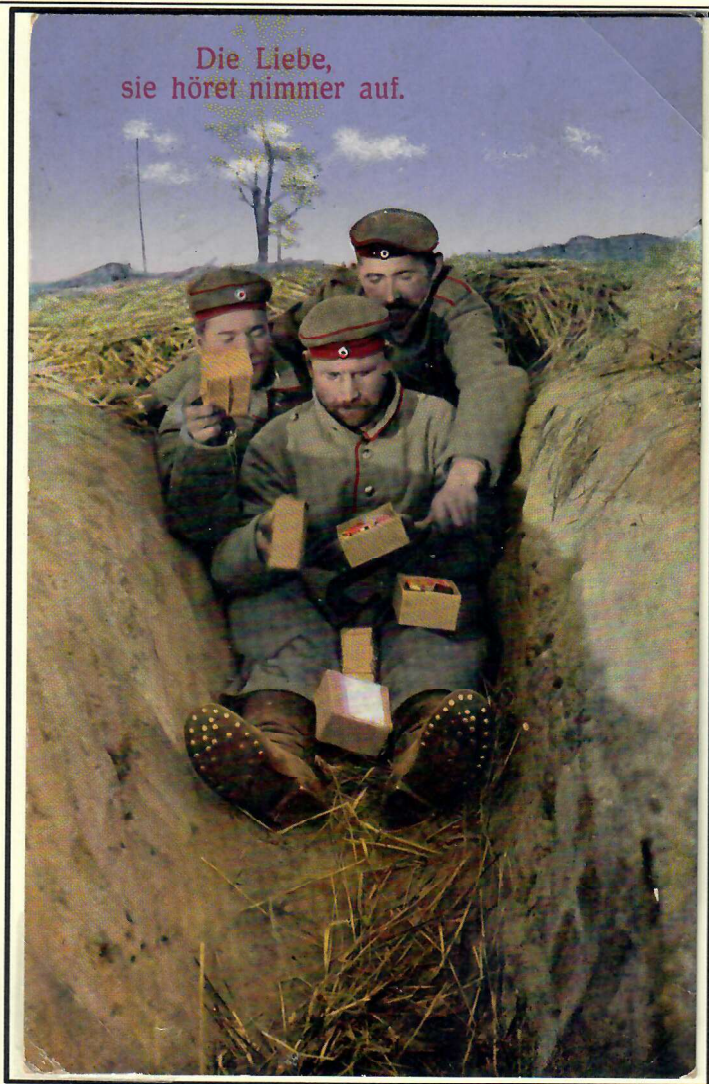
Distribution of the love gifts at the front.
 Postcard is sent with the field post in March 1915.



Photographer: Unknown
Typography: Photomechanical collotype

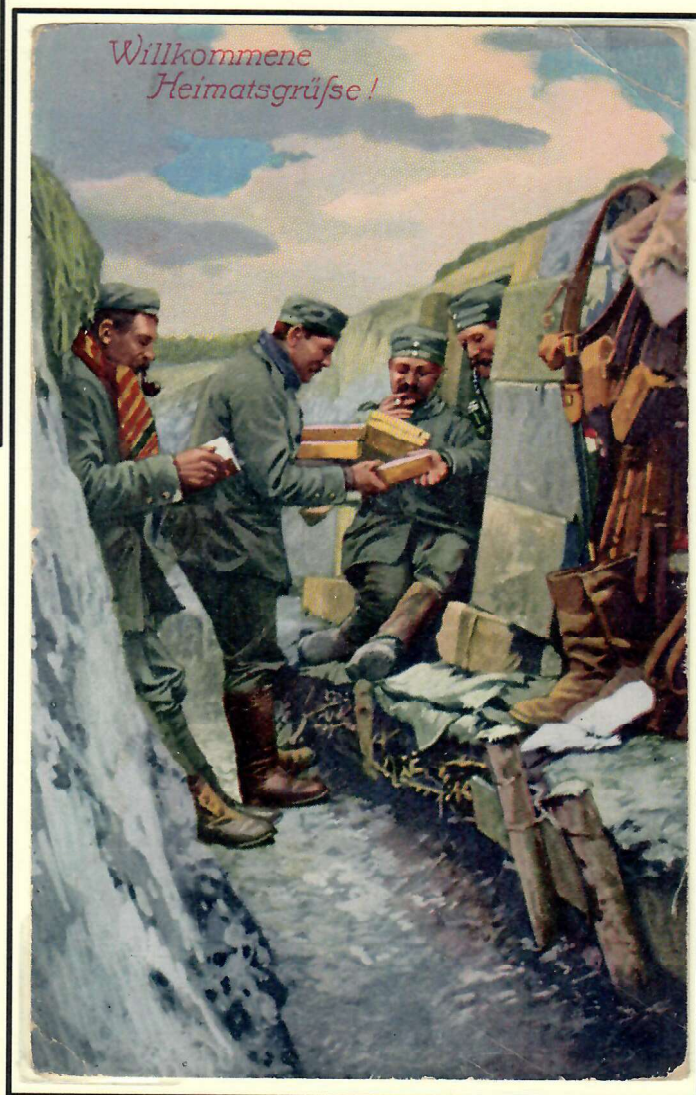
Publisher: Sächsischer Verlagsanstalt G.m.b.H.

Greetings from the front, Field post distribution.
 It is always popular to receive the letters and packages from the home. Picture is from the Western front. The postcard was sent with the field post in May 1917.



Photographer: Unknown
Publisher: JFB
Typography: Photomechanical letterpress halftone

The love never ends, soldiers receiving parcels from home.
Postcard is sent with the field post in October 1916.



Photographer: Unknown
Publisher: Wenau Postkarte
Typography: Photomechanical letterpress halftone

Welcome greetings from home, the distribution of the love
gifts in the trenches on the Western front.
Postcard is sent with the field post in December 1915.



Photographer: Unknown
Publisher: Cark Garte
Typography: Photomechanical letterpress halftone

Heartful Christmas greetings.
Hooray, the field post has arrived.
Postcard is sent with the field post in December 1915.



Photographer: Unknown
Publisher: Unknown
Typography: Photomechanical letterpress halftone

Christmas letter from mother.



Photographer: Unknown

Publisher: J. F. Lehmanns Verlag

Typography: Photomechanical rotogravure

Arrival of the field post on the Western front.



Photographer: Unknown

Publisher: Wilhelm S. Schroeder Nachf.

Typography: Photomechanical letterpress halftone

Love gifts are also very welcome.



Photographer: Unknown

Publisher: Wenau Postkarte

Typography: Photomechanical letterpress halftone

The field post has arrived. Postcard is sent June 1916.



Photographer: Unknown

Publisher: Private

Typography: Photographic bromoil

The mail has arrived in Russia in 1916.



Photographer: Unknown
Typography: Photographic bromoil

Publisher: Private

Mail distribution at the front on the Western front.

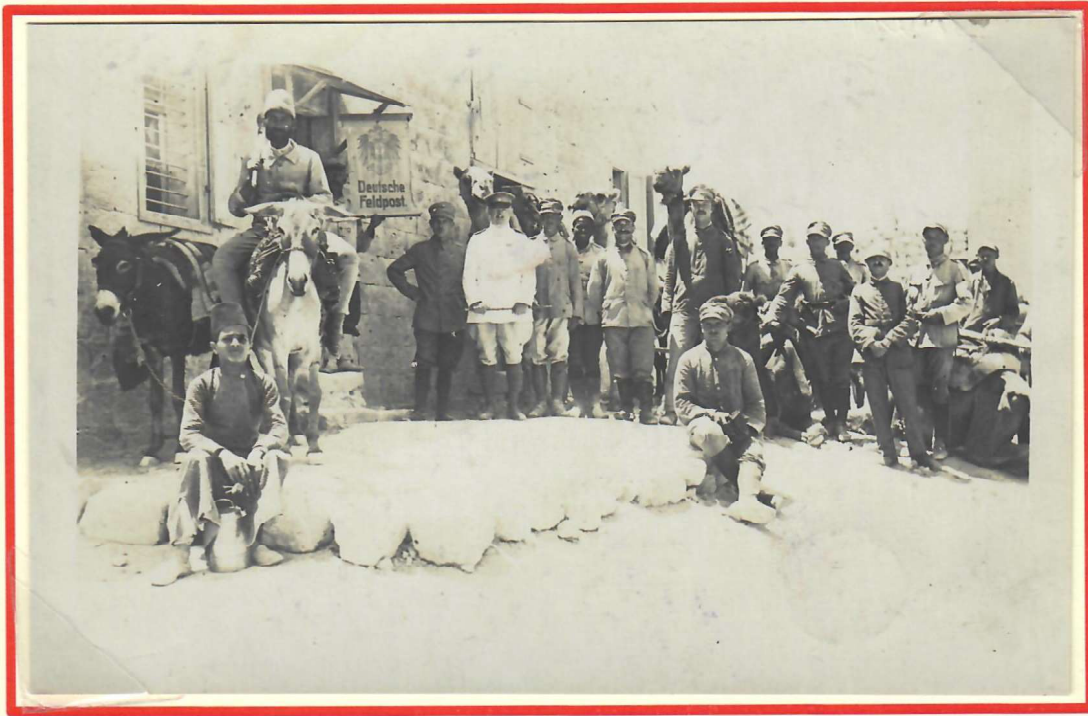


Photographer: Unknown
Typography: Photographic bromoil

Publisher: Private

Arrival of the field post on the Eastern front. Parcels was a big and important part of the distributed mail, and for some soldiers it was even more important than the food.

II – Field Post Offices



Photographer: Unknown

Publisher: Private

Typography: Photomechanical photogravure

German field post office in Palestine. The German headquarter for the Asia Corps was in Nazareth from December 1917 to September 1918.

The postcard is dated Palestine March 1918.

After the mail was written and posted it went to the field post office. The field post system consisted of several different organization levels which where:

Feldpost-Sammelstelle – The field post sorting point in the rear areas. Which had an overview of where the different armies where located and which direction the mail should be sent.

Feldpostamt – The postal district assigned to an army corps. An army corps was usually consisting of two or more divisions with various support troops. The Feldpostamt had its own postal cancel.



Feldpostexpedition – The main postal office for the divisions. By the end of the war 251 divisions had been formed or reformed. The Feldpostexpedition had its own postal cancel.



Feldpoststation – Field post stations was located a little behind the front. The Feldpoststation had its own postal cancel.



After 15th February 1917 the postal cancels were muted so they did no longer displayed the military unit in the cancel.

This part of the collection is aiming to show the different field post offices across the different fronts and sizes of the post office, from the smallest shacks to the main post offices.



Photographer: Unknown

Publisher: Private

Typography: Photographic silver gelatin

Postal workers and some mail from the field post transfer point Tilsit in 1915. Tilsit was at this time located at the border towards Russia, and today is the town Sovetsk on the border between Russia and Lithuania.



Photographer: Illustrations Verlag

Publisher: J. Wieland & Co

Typography: Photomechanical collotype

The field post collecting place in Kolno, Polen.
Mail is stored outside the Feldpostamt.



Photographer: Unknown
Typography: Photomechanical collotype

Publisher: Verlag für allgemeines Wissen

The Feldpostamt in Buzancy, France.



Photographer: Unknown
Typography: Photographic bromoil

Publisher: Private

Postal wagon and workers outside a Feldpostamt. The Feldpostamt was assigned to an army corps, so this must be somewhat behind the frontline on the Western front.



Photographer: Unknown

Publisher: Private

Typography: Photographic silver gelatin

Inside the Feldpostamt for the 10th Reserve Corps, in 1916 the unit was located on the Western front and participated in the battle of Verdun. This is one of the few pictures inside a Feldpostamt, where it is possible to identify it as such.



Photographer: Unknown

Publisher: Private

Typography: Photographic silver gelatin

Soldiers from the same unit outside the Feldpostamt..



Photographer: Alfred Kühlewindt
Typography: Photomechanical collotype

Publisher: Kahan & Co., G.m.b.H.

A truck used for mail transport on the Eastern front, outside the church in Mirunsken, Poland 1915. The church served as a feldpostamt for the division field post. Postcard is sent from Rastenburg 1915 to the front.

This picture has been published 2 times (B&W), with 2 different publishers.



Photographer: Alfred Kühlewindt
Typography: Photographic silver gelatin

Publisher: E. P & Co

Inside the church in Mirunsken, Poland as a stacking place for the division mail. Both of these pictures are used in the Journal "*Illustrierte Zeitung J.J. Weber 10.06.1915, Kriegsnummer 45, Nummer 3754*". The article calls this a "Feldpostamt", while a division would be assigned to a "Feldpostexpedition". The postcard is unused.



Photographer: Unknown
Typography: Photomechanical collotype

Publisher: Ludwig Fries

Outside the Feldpostamt on the Western front.
 Postcard is sent with the field post in March 1917.



Photographer: Unknown
Typography: Photographic bromoil

Publisher: Private

Postal soldiers outside the German field post office, judging by the size and shape of the building it is a Feldpostamt located on the Western front.