



Photographer: Unknown

Publisher: Private

Typography: Photographic silver gelatin

A donkey used for mail transport by a sailor. Postcard with the field post service for the navy is rare, this is the single postcard showing a sailor transporting the field post.



Photographer: Unknown

Publisher: Unknown

Typography: Photographic silver gelatin

A donkey used for mail transport outside the imperial German field post station (Feldpoststation) on the Western front. Postcard sent in January 1916 from the front to home.



Photographer: Unknown

Publisher: Bruno Hannsmann, Cassel (BHC)

Typography: Photomechanical collotype

Post arrival for the company, most likely at the western front.

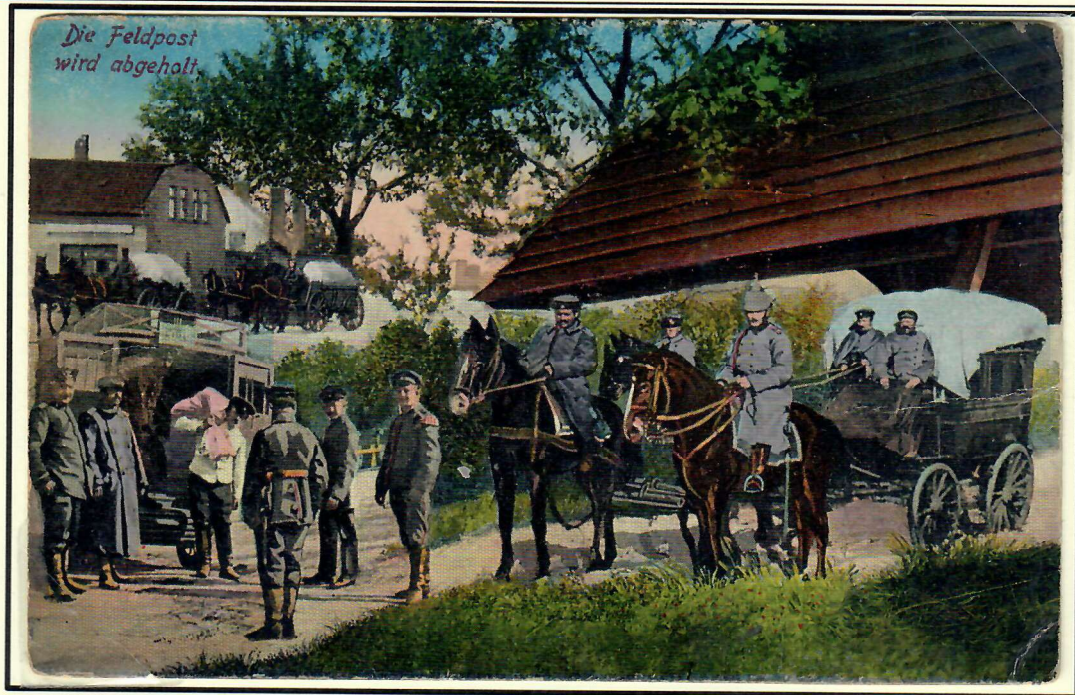


Photographer: Unknown

Publisher: Sächsische Verlagsanstalt G.m.b.H.

Typography: Photomechanical letterpress halftone

Field post with a donkey transporting the mail closer to the frontline on the Eastern front. Postcard is sent with the field post in March 1916.



Photographer: Unknown

Publisher: Carl Garte

Typography: Photomechanical letterpress halftone

The field post is picked up to be transported further on with horses.



Photographer: Eberth Cassel

Publisher: Unknown

Typography: Photomechanical offset lithograph

The welcomed field post in Vogesen, France is arriving by horse.
Postcard is written and dated October 1916.



Photographer: Unknown

Publisher: Private

Typography: Photographic gelatin POP

Postal wagon in front of a battalion building in Holodovo, Eastern front on 1st July 1916.



Photographer: Unknown

Publisher: Unknown

Typography: Photographic silver gelatin

Our field post in the Argonne in northern France. Arrival of a lot of mail transported by four horses to the soldiers.



Photographer: Unknown

Publisher: Private

Typography: Photographic gelatin POP

Postal workers with a horse outside the field post station.

Postcard is sent with the field post in May 1916 from field post station 215.



Photographer: Unknown

Publisher: Private

Typography: Photographic silver gelatin

The mail is loaded onto a horse wagon somewhere on the Western front.

Postcard is sent with the field post in January 1917 from field post expedition for the 58th Infantry Division. The 58th Infantry Division was located in France at this date.



Photographer: Leipziger Presse-Büro

Publisher: Sächsische Verlagsanstalt G.m.b.H.

Typography: Photomechanical letterpress halftone

Royal Bavarian field post at the Bavarian III. Army Corps in St. Benoit, France.

The mail is transported by horses. Postcard is sent with the field post in March 1916.

This picture has been published 2 times (color and B&W), with 2 different publishers.



Photographer: Unknown

Publisher: Private

Typography: Photographic silver gelatin

A mail carriage belonging to the 22nd Reserve Division.

Postcard is sent with the field post in May 1917, at this time the 22nd Reserve Division was located in France.



Photographer: Unknown

Publisher: Private

Typography: Photographic gelatin POP

Somewhere on the Western front, the sender wrote "... today I may send you a small picture with me and my postal wagon ...".

Postcard is written but not sent and dated in October 1917.



Unsere Geldpost

„Die Pferde dieses Geldpostwagens wurden durch
Volltreffer getötet, während Führer und Fahrer
unverletzt blieben.“

Photographer: Unknown

Publisher: Unknown

Typography: Photomechanical letterpress halftone

Our field post, this field post wagons horse was killed due to a direct hit, while the two coaches were unharmed. Postcard is written but not sent.

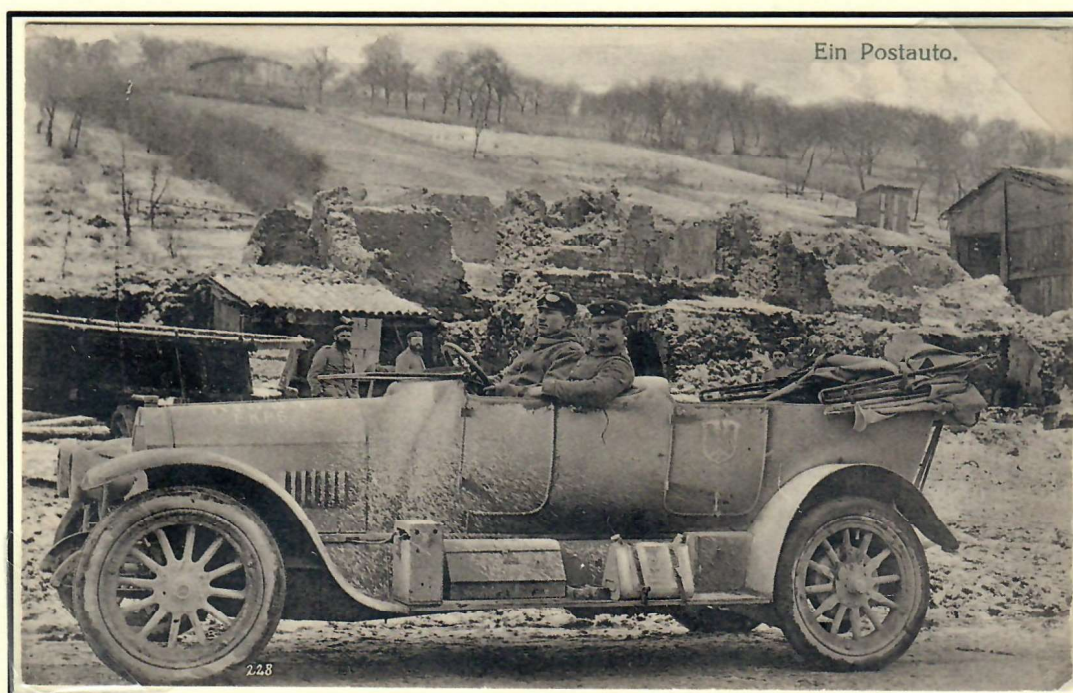


Photographer: Unknown

Publisher: Unknown

Typography: Photographic silver gelatin

The field post transport by horse outside the field post office on Kaiser Wilhem Strasse in Cunel, Northwest France. The building with the "F" (Feldpost) on the wall is the field post office.



Photographer: Unknown

Publisher: E. Sanwald

Typography: Photomechanical collotype

A post car at the Western front.
Postcard is sent with the field post in December 1915.



Photographer: Unknown

Publisher: Sächsische Verlags-Anstalt G.m.b.H.

Typography: Photomechanical letterpress halftone and red lines handpainted

Arrival of the field post transported by truck.
Postcard is sent with the field post in March 1916.



Photographer: Hptm. Bansa

Publisher: P. Wever

Typography: Photographic silver gelatin

Field post sorting in the bivouac after arrival by truck.



Photographer: Alfred Kühlewindt
Typography: Photomechanical collotype

Publisher: O. Ziegler

The field post arrives with a truck and soldiers receive/send their mail. Postcard sent in April 1915 from the front to home. Filipowo is in Poland today. Picture is taken in 1914. Postcard sent from 20th Armekorps in Borkowo in April 1915.



Photographer: Alfred Kühlewindt
Typography: Photographic silver gelatin

Publisher: Gustav Liersch & Co

The field post arrives with a truck and soldiers receive/send their mail in Filipowo, Russia (Poland today). Postcard sent in December 1914 from Posen to Sachsen.



Photographer: Unknown

Publisher: Carl Garte

Typography: Photomechanical letterpress halftone

The field post station at the Western front after the arrival of the mail by truck.
Postcard is sent with the field post in June 1917.



Photographer: Unknown

Publisher: BHC

Typography: Photomechanical collotype

Field post in operation, most likely at the western front.

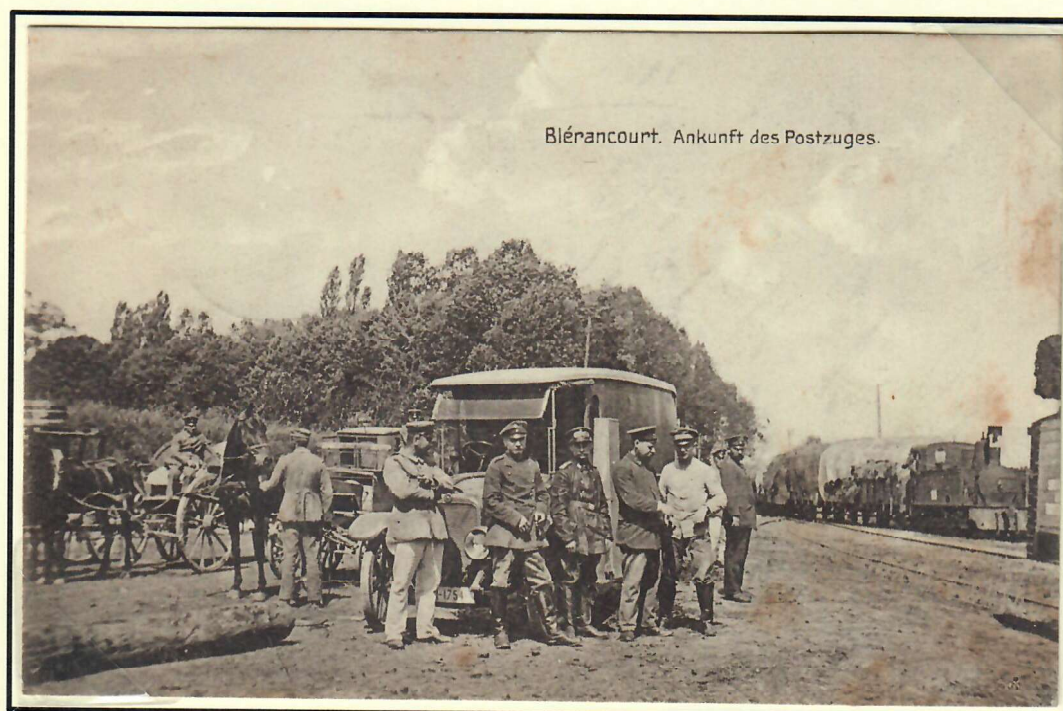


Photographer: Unknown

Publisher: Imberg & Lefson G.m.b.H.

Typography: Photomechanical letterpress halftone

German field post truck is crossing a river in Galicia.
Postcard is sent by field post in May 1916.



Photographer: Unknown

Publisher: Kunst- u. Verlagsanstalt
Schaar & Dathe

Typography: Photomechanical collotype

The train is to arrive with the mail and be transported further by truck in Biérancourt, France.
Postcard is sent by field post in January 1916.



Photographer: Unknown

Publisher: Unknown

Typography: Photographic silver gelatin

Horse and train used for transport of the mail.
Postcard is sent by field post in December 1915.



Photographer: Unknown

Publisher: Private

Typography: Photographic silver gelatin

Horse wagon transporting the mail further on after the train transport. Postcard is unused.



Photographer: Gebrüder Haeckl

Publisher: Unknown

Typography: Photomechanical offset lithograph

The mail has arrived by train and the field post mailbags will be transported to the Feldpostamt. This picture has been published 2 times (color and B&W), with 2 different publishers.



Photographer: Bericht Hoffmann

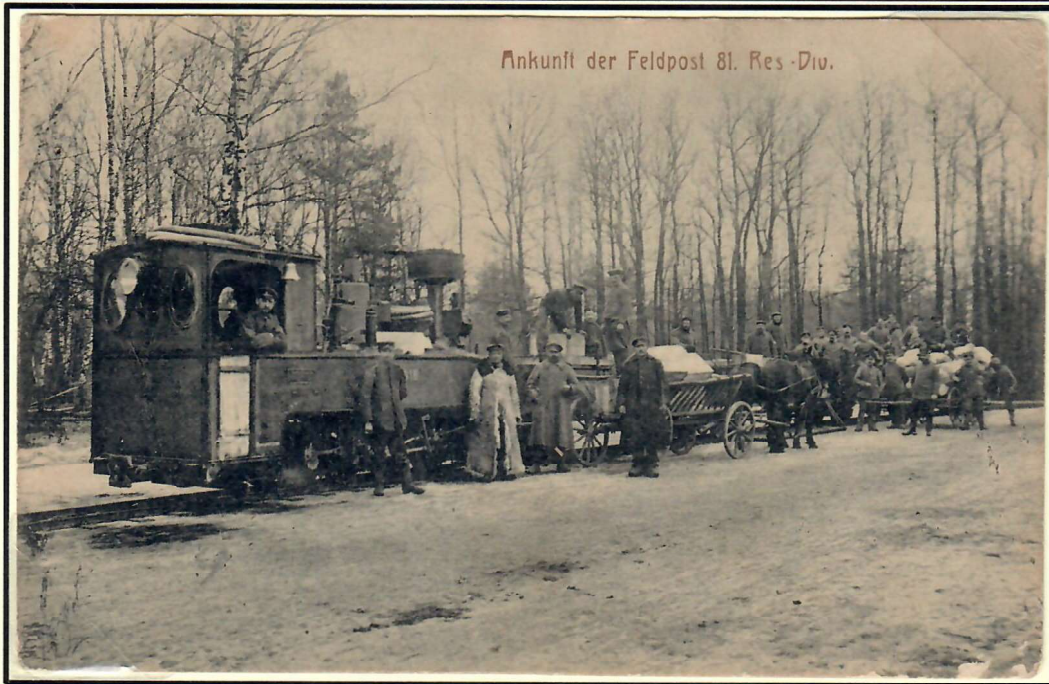
Publisher: Sächsische Verlags-Anstalt G.m.b.H.

Typography: Photomechanical letterpress halftone

Mail arrived by train from the home to the Bavarian field post in Chambley, France. The postcard itself has been censored (retouched) to remove the location Chambley from the wall on the building. Postcard is sent by field post in December 1915. This picture has been published 3 times (color 2 times and B&W), with 2 different publishers.



Copy from other card with name



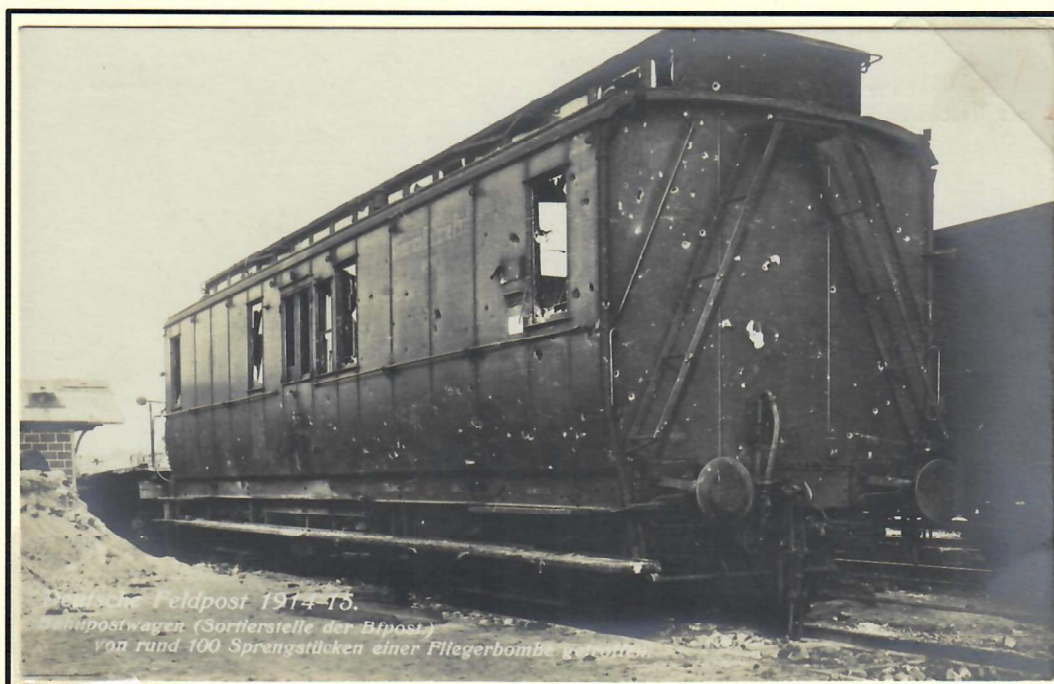
Photographer: W. Werner

Publisher: Unknown

Typography: Photomechanical collotype

Arrival of the field post for the 81st Reserve Division. This division was formed in December 1914 and started its initial fighting on the Western Front. It was transferred to the Eastern Front in April 1915. After September 1915 it was settled into positional warfare in the Pripyat Marshes, where it was until December 1917.

Postcard is sent in March 1916, indicating that the location is the Pripyat Marshes.



Photographer: Unknown

Publisher: Unknown

Typography: Photographic silver gelatin

Transporting the mail is not without danger, mail wagon attacked by plane. Postcard is not used, but the photo is taken in 1914/15.

The End of the War and the Aftermath



Photographer: Wilh. Riegger

Publisher: Graph. Anstalt, Karlsruhe

Typography: Photomechanical letterpress halftone

Several personnel of the German field post service died during the war. A memorial plaque raised after the war in memory of the lost service men.



Photographer: Koch

Publisher: Dr. T. V. Lpz.

Typography: Photomechanical letterpress halftone

In 1939 the second world war started and again it was necessary with the German field post service. The motive was so good that it was reused (compare with page 1 together with the plan).